



# **Rejuvenation and the Economy**

## **Transforming Cities Fund – a South West Focus**

**Richard Banner**

**Plymouth City Council**

**Ian Beavis and Marc Griffin**

**WSP**

**#CIHTSW2020**



Transforming Cities Fund

## TCF – SW Focus

Richard Banner – Plymouth City Council

Ian Beavis – WSP

Marc Griffin – WSP



# Theme of the Day

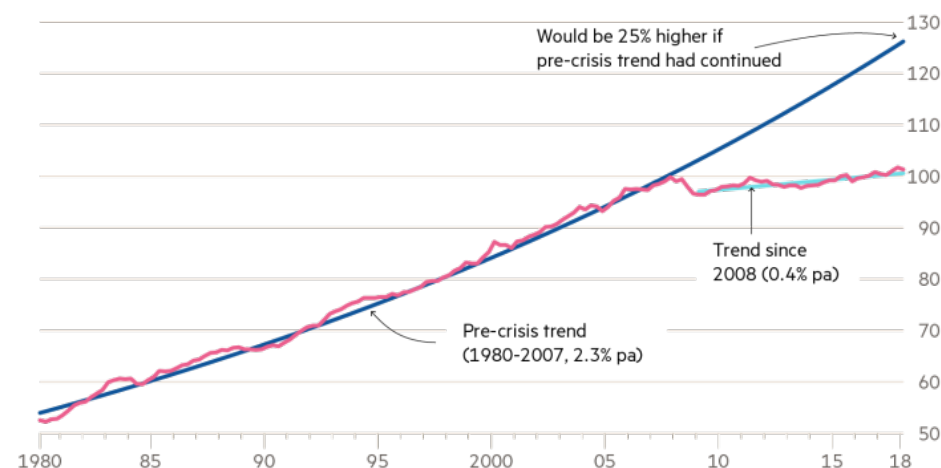
*“Rejuvenation and the economy: insights into how transport can influence a region’s prosperity”.*

# Low UK Productivity

- Worker today produces same amount in 1hr as did 10 years ago
- The average French worker produces more by the end of Thursday than their UK counterpart can in a full week

The productivity slowdown in Britain has been stark

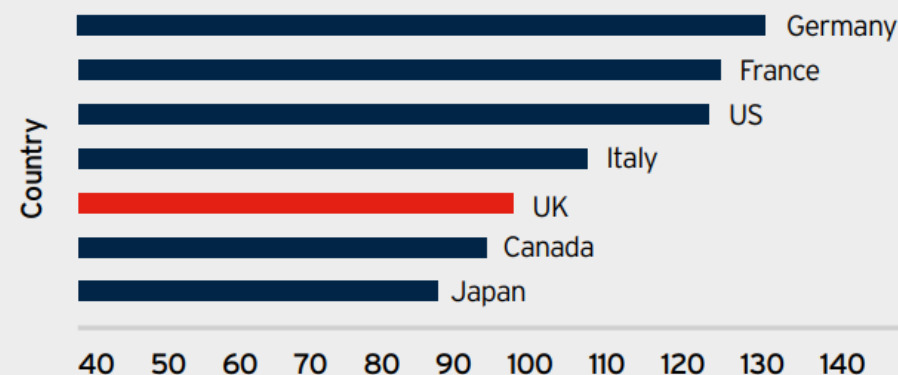
Output per hour worked (2016 = 100)



Sources: ONS; FT analysis  
© FT

## UK productivity relative to other G7 countries

GDP per hour worked, 2016, index: UK=100



Source: ONS (2017) International Comparisons of Labour Productivity.

# Industrial Strategy

*Create a transport  
system more resilient to  
future change*

## 4 Grand Challenges:



### AI & Data Economy

We will put the UK at the forefront of the artificial intelligence and data revolution



### Clean Growth

We will maximise the advantages for UK industry from the global shift to clean growth



### Future of Mobility

We will become a world leader in the way people, goods and services move



### Ageing Society

We will harness the power of innovation to help meet the needs of an ageing society

Our five foundations align to our vision for a transformed economy

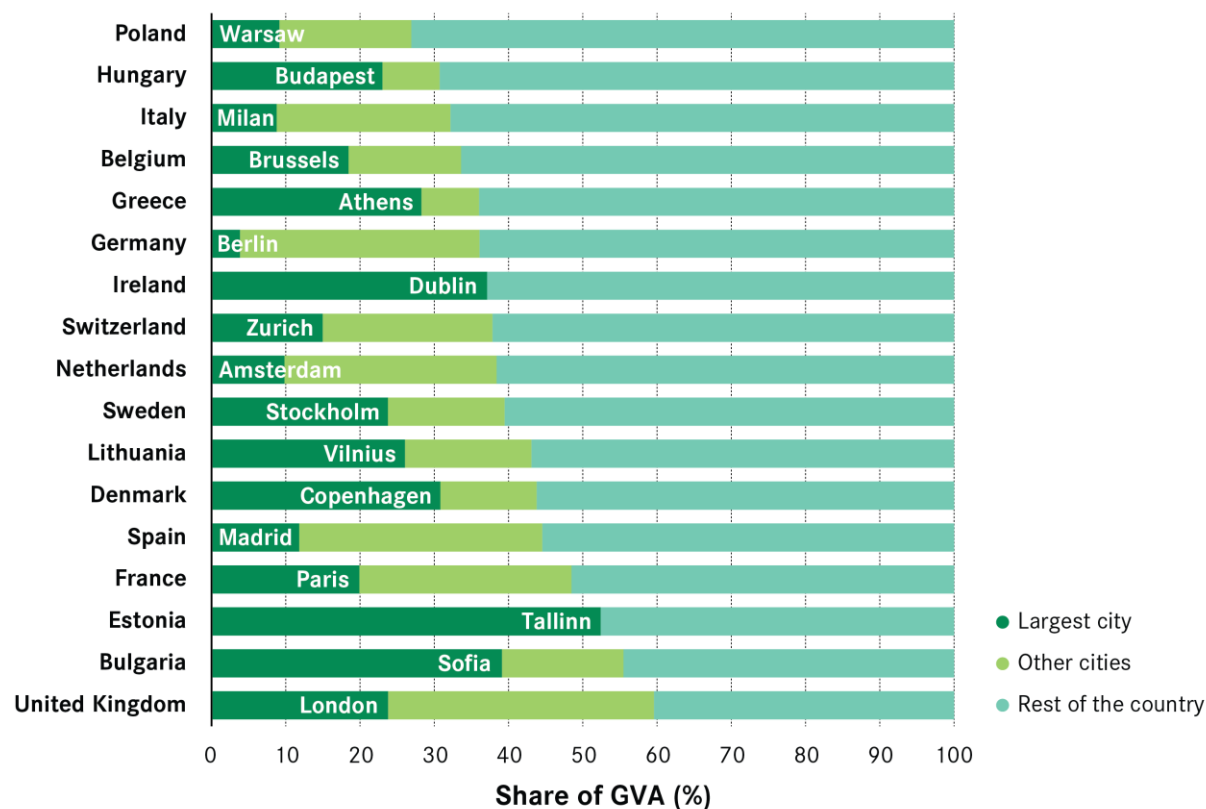


# Transport Investment

- Investment in transport can provide boost to productivity and the economy
- Main economic aims of transport spending:
  - *Reducing transport costs to businesses and commuters (e.g. by reducing journey times, congestion or fares)*
  - *To stimulate the UK and local economies (e.g. by raising productivity of existing companies and workers, and attracting new companies or investment)*
  - *Increasing access of companies to the labour pool and of workers to employers*

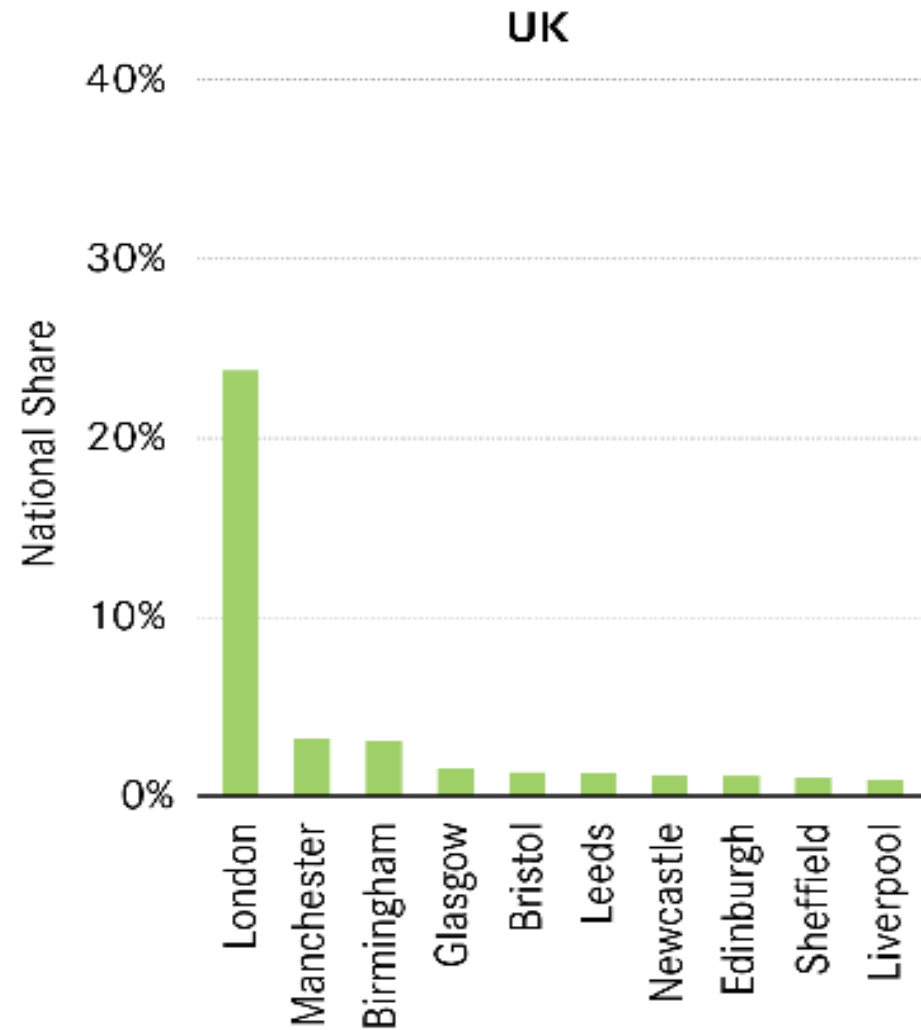
# TCF Investment

- TCF investment focussed on Cities / Combined Authorities
- Cities / conurbations play a much larger role in the UK economy than their counterparts in other European countries.
- *Around 60 per cent of UK output is generated in its cities – in no other country do cities represent such a high share of national GVA.*



# TCF Investment

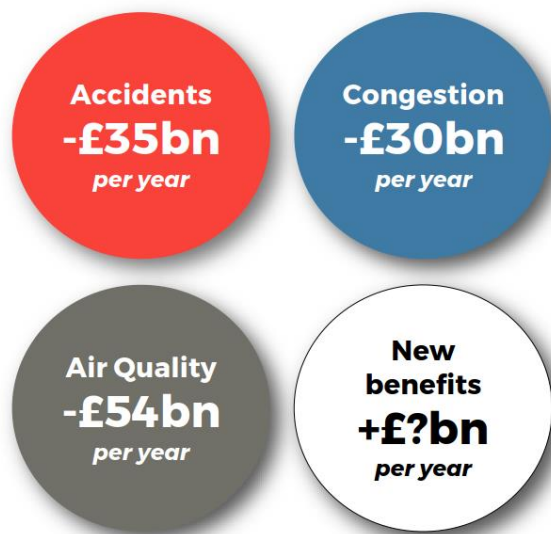
London dominates  
GDP share within UK



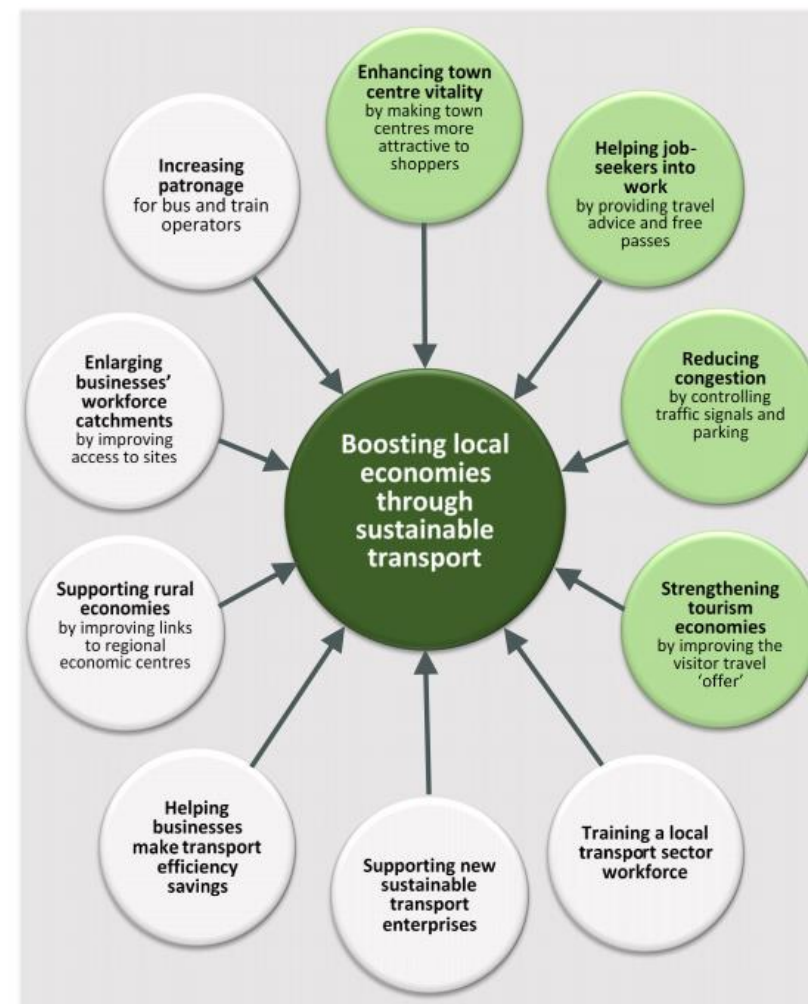


# Sustainable Transport

How does investment in sustainable transport boost the economy?



Average road speeds  
in urban areas have  
fallen 4.7% since  
2014



# Evidence from LSTF

**Impact of the Local Sustainable Transport Fund:**  
Synthesis of Evidence

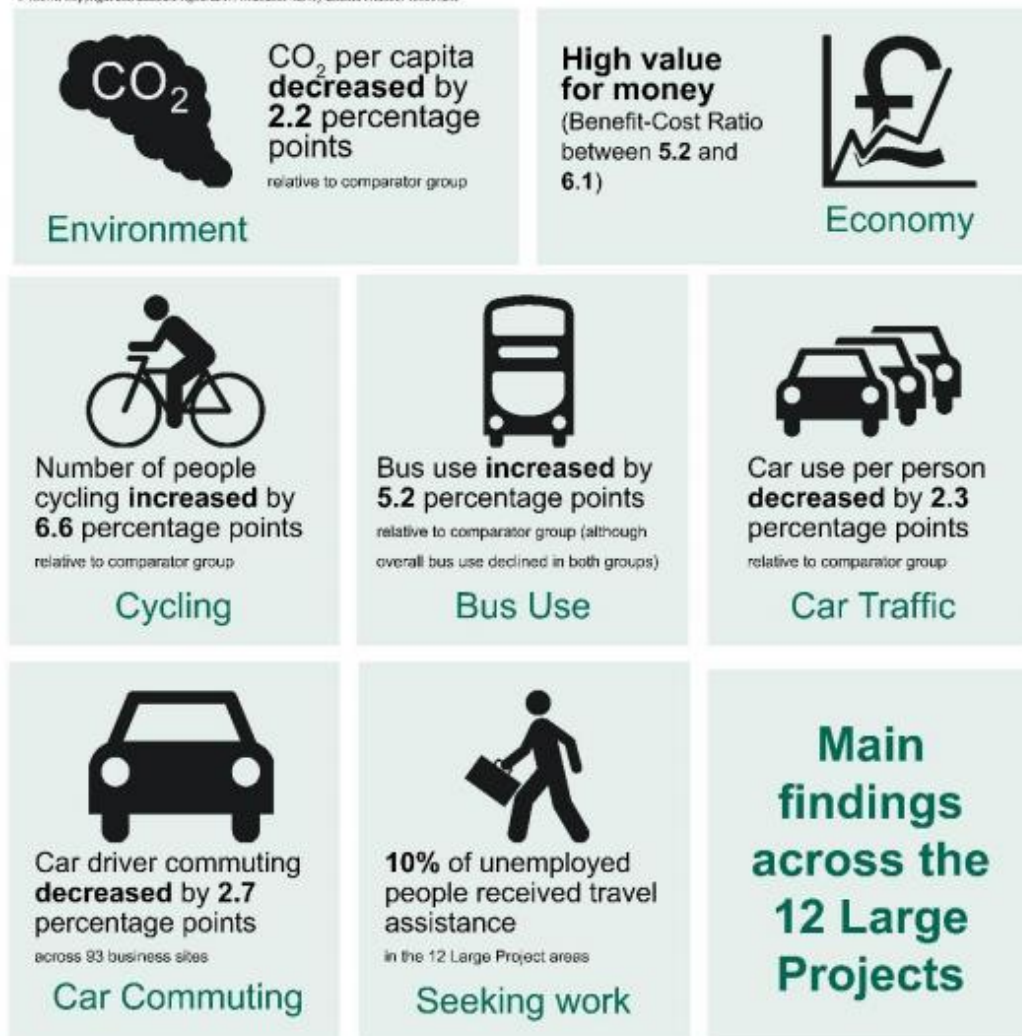


Report to the Department for Transport, August 2018  
Lynn Sloman, Sally Cairns, Anna Goodman, Jean Hopkin,  
Ian Taylor, Lisa Hopkinson, Oliver Ricketts, Beth Hiblin and Matthew Dillon

transport for quality of life

ARUP 

© Crown Copyright and database rights 2017. Ordnance Survey Licence Number 100019251



# Evidence from LSTF

Interventions helped people to get and keep jobs

>80% of people in Sheffield City Region who received travel training via work clubs & job clubs felt **more confident planning journeys**

73% of job-seekers who received half-fare pass in Nottingham agreed that without it they would not have been **able to reach interview**

Nearly 75% of people in West Midlands who had received free bus travel for first 1-3 months in new job were **still in work 6 months later**

47% of workers using Local Link buses to get to employment sites in G. Manchester wouldn't have been **able to get to work** without them

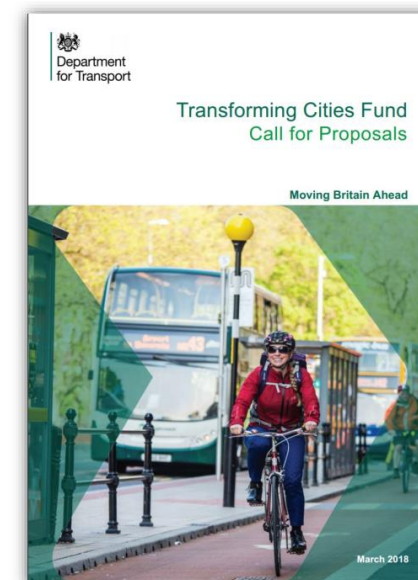
# What is TCF?

*As part of the Government's Industrial Strategy and the National Productivity Investment Fund, the Transforming Cities Fund was developed to drive up productivity through improved connections between urban centres and suburbs.*

*To do this, DfT are investing in infrastructure to improve public and sustainable transport connectivity in some of England's largest cities and city regions*

 Department  
for Transport

The result – TCF announced at Autumn Budget 2017





# TCF Objectives



Access to work & Delivering Growth



Derived & prioritised using LCWIP or  
Quality Bus Partnership



New Mobility systems and Technology



Sustainable travel



Drive up productivity through improved  
transport connections



Delivering Apprentices & improving  
skills



Enabling Delivery of More homes



Tackling air pollution & reducing  
emissions

# TCF - Strategic Context

- Economy/Productivity



Transforming Cities Fund

- Housing & Business Development



- Local Government Reorganisation



- NHS Clinical Services Review



- Smart City Initiatives



- Inward Investment, Manufacturing/Innovation Opportunities



# TCF - Transport Context



## BCP

Between 2018 and 2050:

- 3<sup>rd</sup> fastest growing large (non-mayoral) city region
- 6<sup>th</sup> most congested large (non-mayoral) city region

## Plymouth

- A total of 1,403 dwellings (gross) completed in the Plymouth Administrative Area (Apr17 – Mar18).
- £5bn GVA, 6,560 businesses and 109,000 jobs

# TCF – Transport Methodology

- Reduce Demand
- Shift Demand
- Manage Demand





# TCF - Transport Benefits

- Reduced congestion
- Greater travel choice
- Active/healthier travel
- Improved air quality





# Productive Plymouth

Delivering a world class  
sustainable transport system

Richard Banner MSc MCIHT

Transport Strategy Co-ordinator

Plymouth City Council

# TCF Vision

A world class sustainable transport system to help transform Plymouth into one of Europe's most vibrant waterfront cities

- **Connectivity**

*Seamless, door to door, reliable, faster, multi modal and interoperable sustainable travel choices*

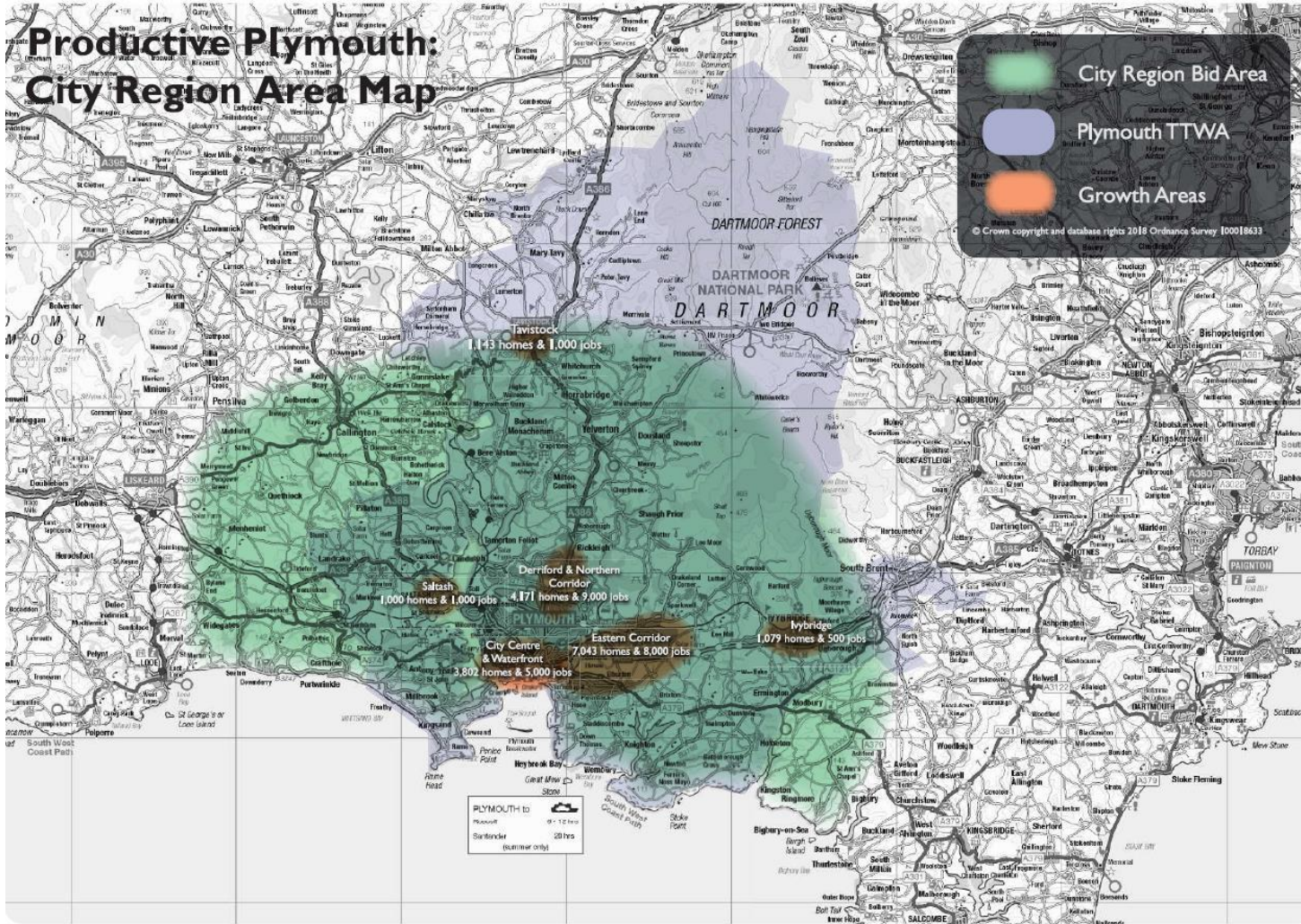
- **Quality**

*Better vehicles, cleaner air and excellent infrastructure*

- **Clarity**

*Legible, accessible & personalised multi-format travel information*

# Plymouth City Region

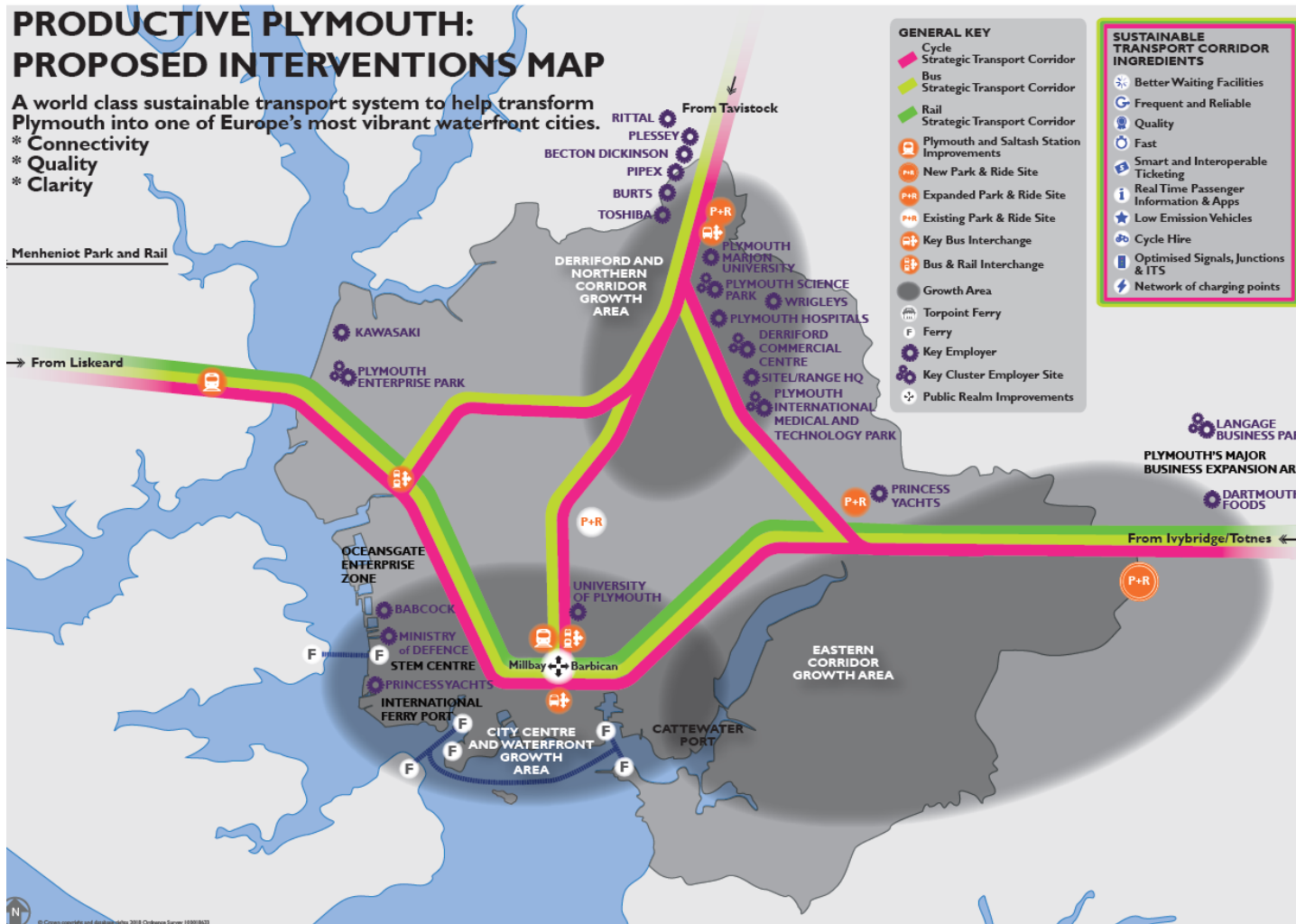


City regions with workday populations above 200,000 people will score strongly.

In recognition that functional city geographies do not always reflect local authority boundaries, Local authorities may wish to bid jointly where a clear 'city region' can be defined.



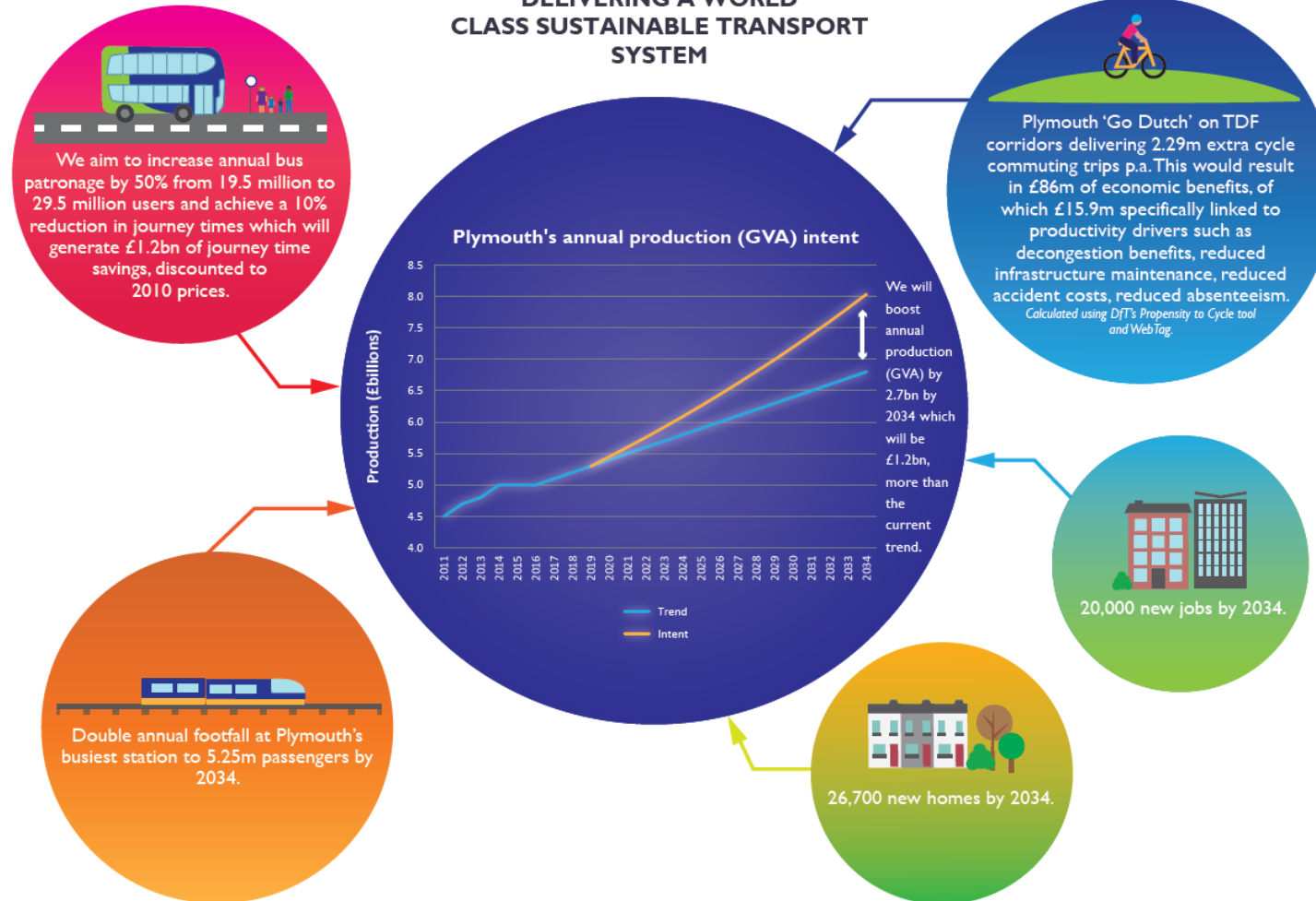
# EOI Proposed Interventions



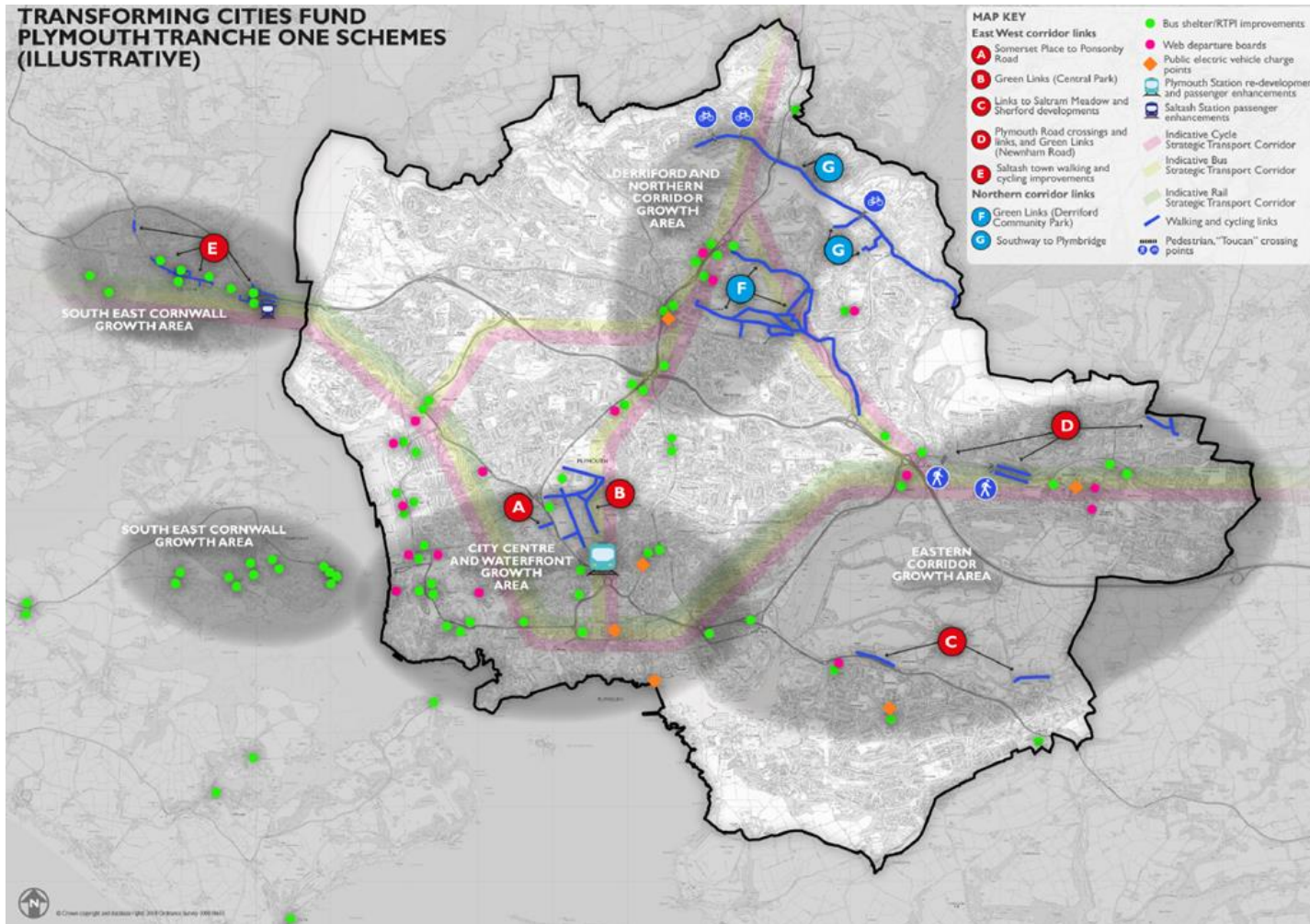
- Up to £100m of investment
- Reducing PT journey times
- Connecting areas of deprivation with areas of employment.
- New bus/rail interchanges and strategic Park & Ride
- Walking and cycling improvements
- Clearer travel information

# Productive Plymouth – Outcomes

## DELIVERING A WORLD CLASS SUSTAINABLE TRANSPORT SYSTEM



# TCF Tranche One



Growing the Electric Vehicle (EV) Charge point Network.

Northern Sustainable Transport Corridor

East-West Sustainable Transport Corridor

Plymouth Station Concourse Improvements

# TCF Funding Awards

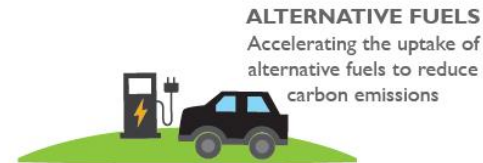
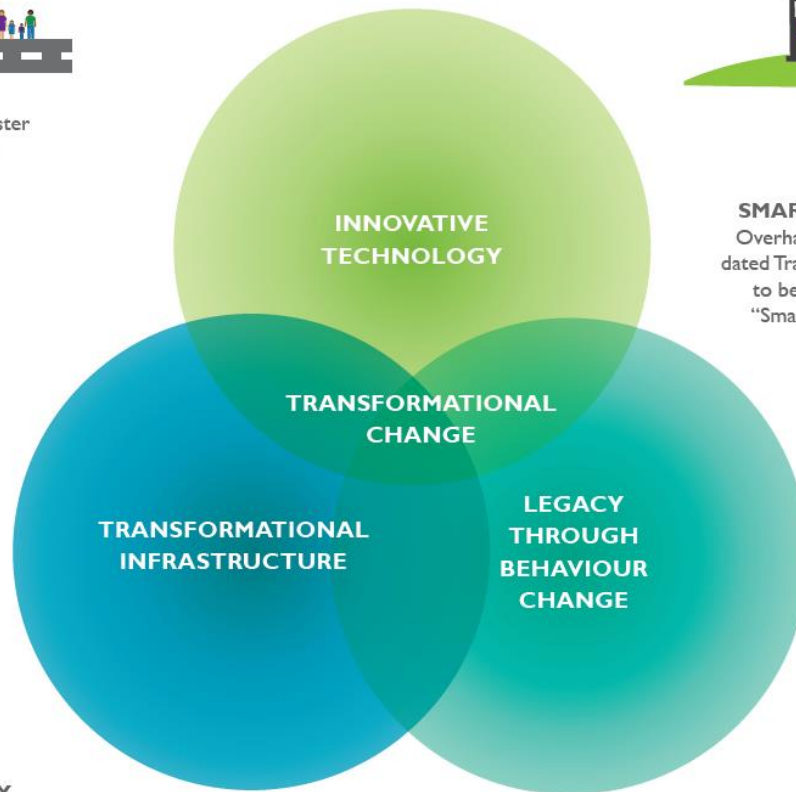
City Region	Funding Award	Rank
North East Combined Authority	£10 million	1st
Leicester	£7.8 million	2nd
<b>Productive Plymouth</b>	<b>£7.6 million</b>	<b>3rd</b>
Derby & Nottingham	£7.2 million	4th
Norwich	£6.1 million	5th
Southampton	£5.7 million	6th
Stoke-on-Trent	£5.6 million	7th
Sheffield City Region Combined Authority	£4.2 million	8th
Portsmouth and South East Hampshire	£4 million	9th
West Yorkshire Combined Authority	£2.2 million	10th

Competitive Fund	2018/19	2019/20	2020/21	2021/22	2022/23	Total
Capital (£m)	60	110	160	510	440	1,280
	Tranche 1	Tranche 2				



# TCF Tranche 2

## ENHANCING THE TRANSPORT OFFER



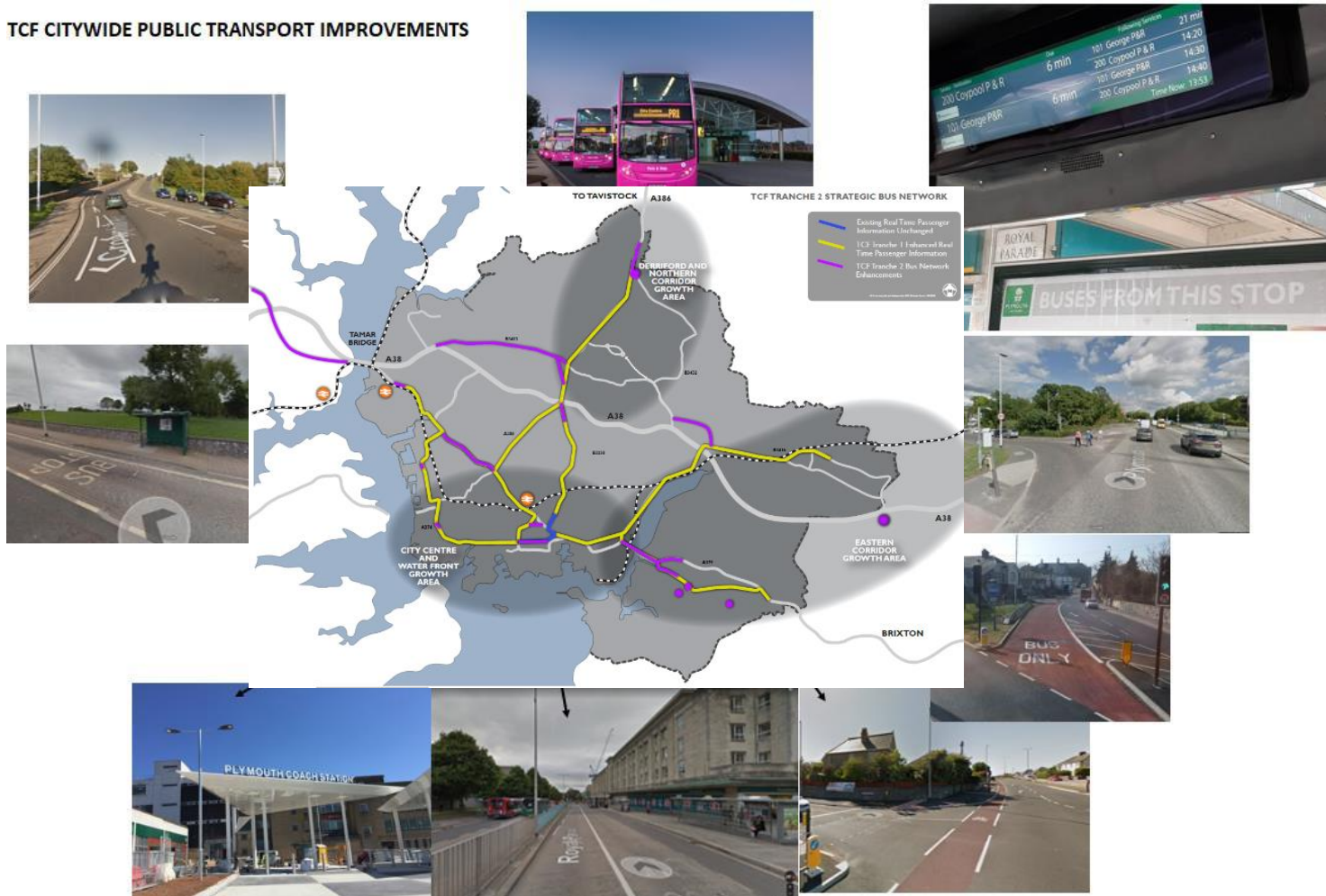
# Citywide Cycling Improvements

TCF CITYWIDE CYCLING IMPROVEMENTS



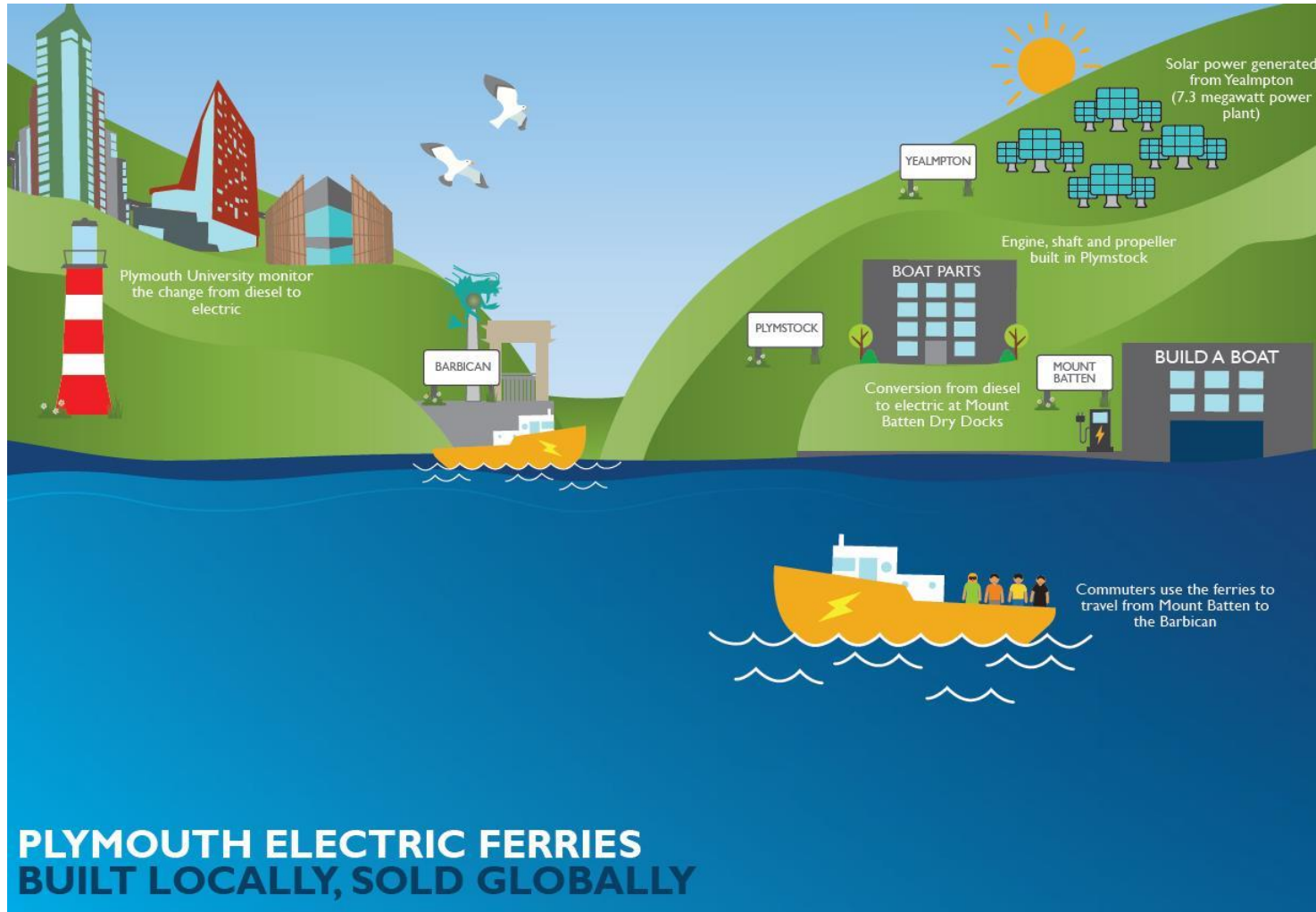
# Public Transport Improvements

## TCF CITYWIDE PUBLIC TRANSPORT IMPROVEMENTS





# Electric Ferry Infrastructure



# TCF – Focus on SEC City Region

- EOI
- Funding increased – Invited to Tranche 2
- Submission of Draft SOBC June 2019
- Submission of final SOBC November 2019



# SED City Region

Transforming Cities Fund



## Key facts

**8th**

Largest non-mayoral city region in England



**480,000**  
SED City Region Population

**3rd**

most congested place in the UK



**56th**  
most congested place in the world

**Poor rail speed**  
into London



**4th**

Bournemouth is in the top 5 worst nationally for cycle casualties



**20,000**  
new jobs by 2026



**29,400**  
new homes by 2026

**7,000** people drive less than 2km to work each day



**64%** journey to work - car mode share



**12%**

of all employment related to tourism



**17m**

day and overnight visitors to the area per year



**Declared**  
climate & ecological emergency

**85%**

bus use increase between 2004/05 & 2016/17

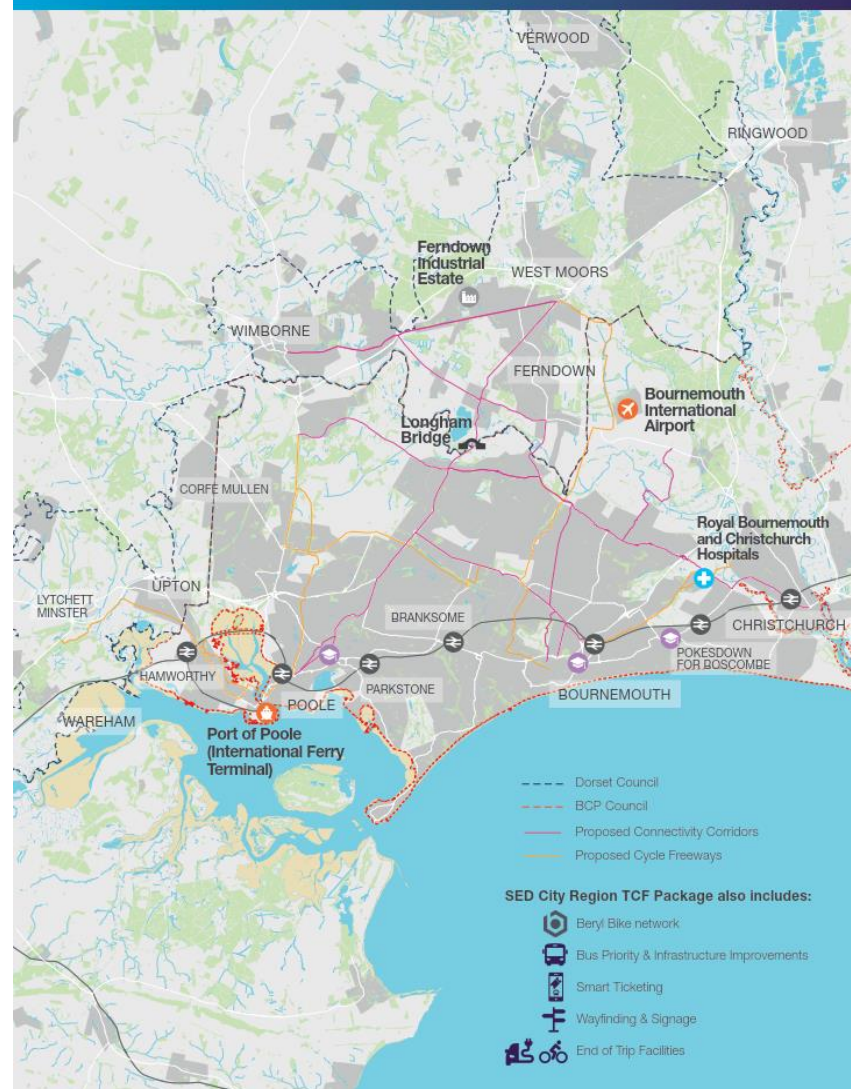


**2030**

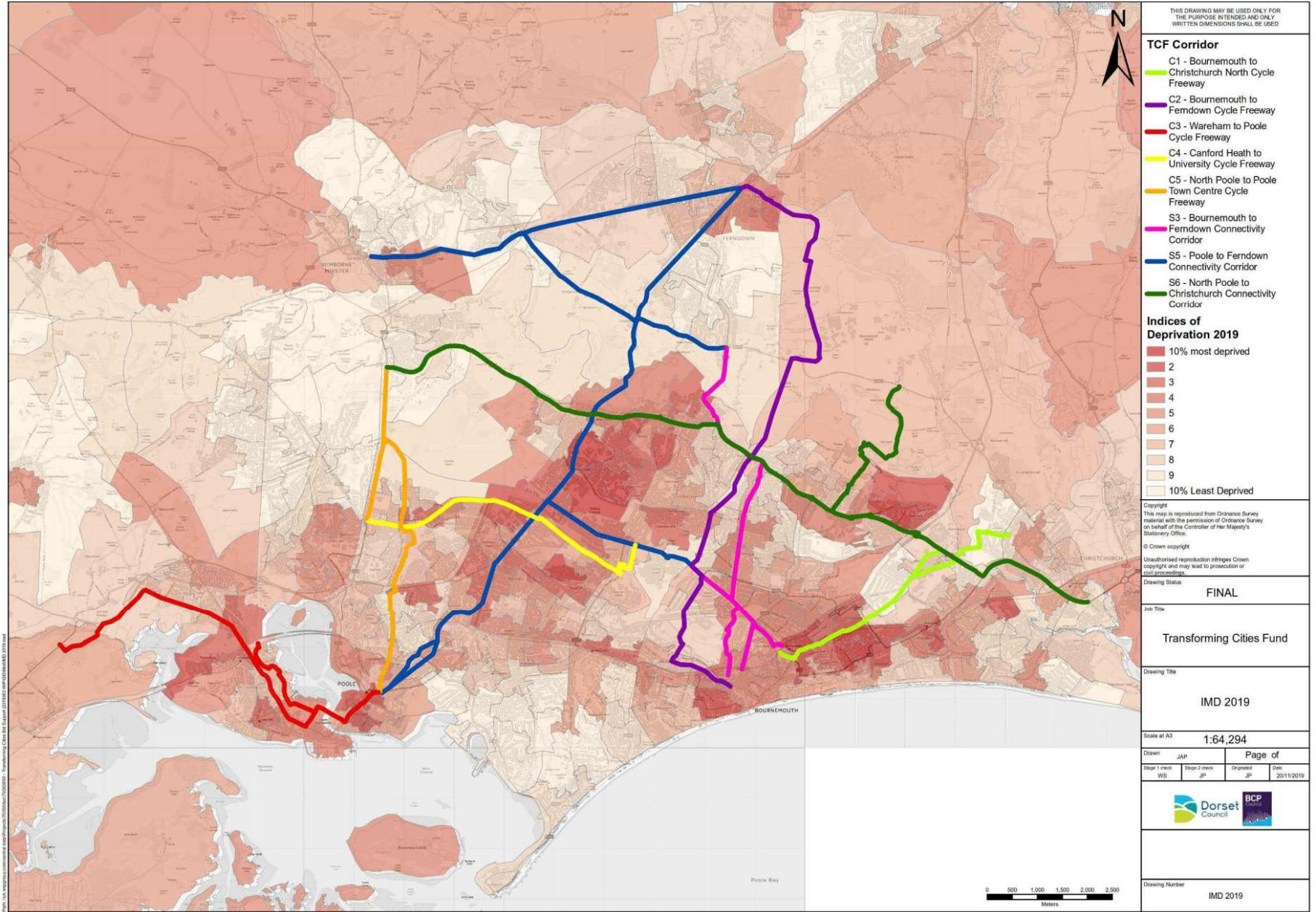
carbon neutral target



## SED TCF Package







# TCF - Total Place approach – BCP&D

- Political Commitment to join up:
  - Strategic Planning;
  - Sustainable Transport Policy review (including Parking Policy);
  - Smart Growth; and
  - Public Transport Powers – Freedoms and Flexibilities.
- All sector commitment eg NHS, Major Employers, Airport, Port, Sustrans.



# TCF – Importance of Stakeholders



Transforming Cities Fund



# Importance of Stakeholders Cont....



# Importance of Stakeholders Cont....



Transforming Cities Fund

